

PRODUCT INFORMATION PACKET



Model No: BN35V1

Catalog No: BN35V1

Pool Pump Motor, 1.5 HP, 1 Ph, 60 Hz, 230/115 V, 3600 RPM, 48Y Frame, DP



Regal and Century are trademarks of Regal Rexnord Corporation or one of its affiliated companies.
©2022 Regal Rexnord Corporation, All Rights Reserved. MC017097E





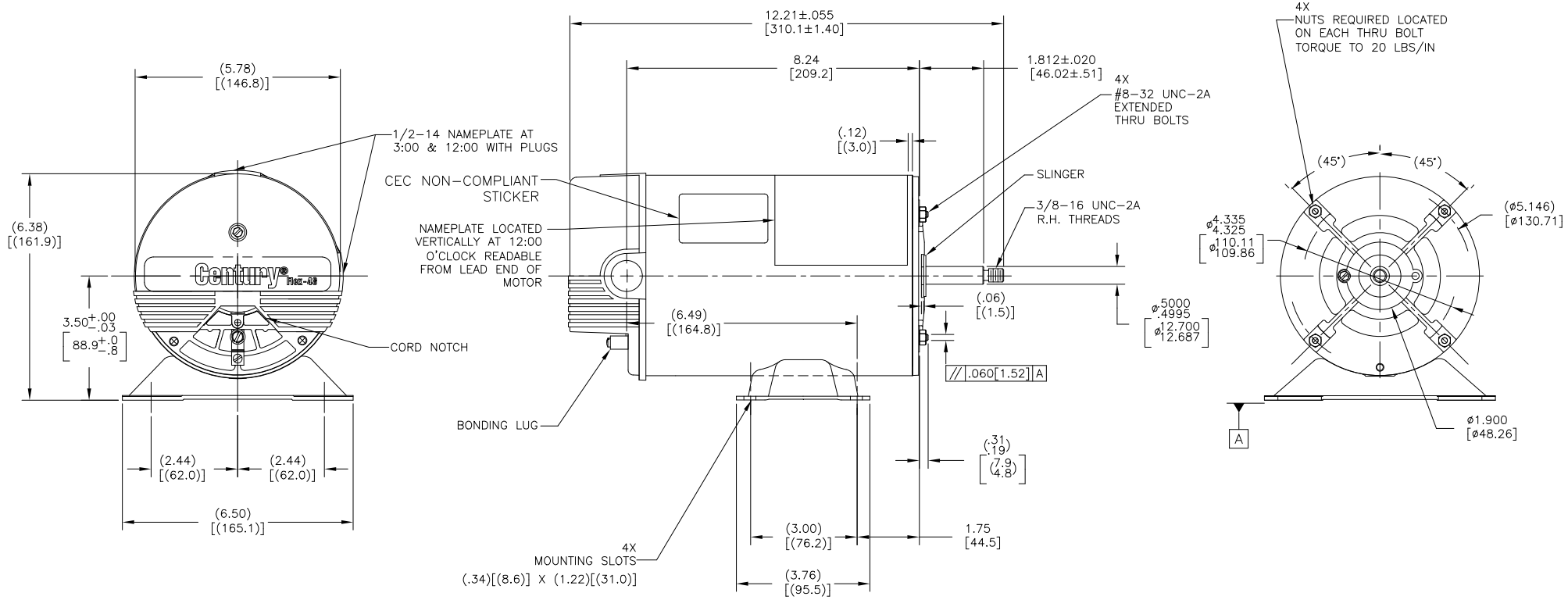
Nameplate Specifications

Output HP	1.5 Hp	Output KW	1.1 kW
Frequency	60 Hz	Voltage	230/115 V
Current	8.0/16.0 A	Speed	3450 rpm
Service Factor	1	Phase	1
Duty	Continuous	Insulation Class	B
Frame	48Y	Enclosure	Drip Proof
Thermal Protection	Thermally Protected	Ambient Temperature	40 °C
UL	Recognized	CSA	Y
Number of Speeds	1		

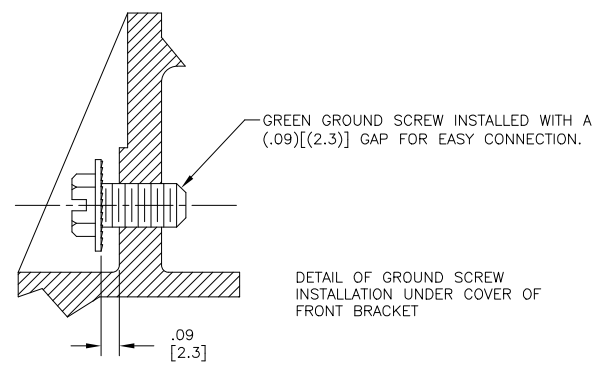
Technical Specifications

Electrical Type	Capacitor Start, Induction Run, Single Or Dual Voltage	Poles	2
Rotation	Counterclockwise Pump End	Mounting	Thru Bolt
Motor Orientation	Horizontal	Drive End Bearing	Ball
Opp Drive End Bearing	Ball	Frame Material	Rolled Steel
Shaft Type	3/8 Threaded	Overall Length	12.08 in
Frame Length	7.50 in	Shaft Diameter	0.500 in
Shaft Extension	2.375 in		
Outline Drawing	BN35V1-S01	Connection Drawing	D0000480-001

This is an uncontrolled document once printed or downloaded and is subject to change without notice. Date Created:11/28/2022



NAMEPLATE DATA	EXTERNAL CONNECTION DIAGRAM	NOTES
MODEL: C48AA72A01 CUST PN: BN35V1 HP: 1.5 SF: 1.0 ROT: CCWPE RPM: 3450 TYPE: CS CODE: H FORM: FRAME: 48Y VOLTS: 230/115 AMPS: 8.0/16.0 MAX AMPS: SF AMPS: PH: 1 HZ: 60 INS: B AMB: 40 DUTY: CONT ENCLOSURE: DP THERMALLY-PROTECTED	<p>HIGH VOLTAGE: 1-LINE, 3-BLACK TR, 5-BLACK, 6-LINE LOW VOLTAGE: 1-LINE, 3-BLACK TR, 5-BLACK, 6-LINE NON-REVERSIBLE USE COPPER CONDUCTORS ONLY</p>	<ol style="list-style-type: none"> LEAD END FRAME TO BE ORIENTED TO DRIVE END FRAME TO WITHIN ±2°. ALL DIMENSIONS SHOWN IN PARENTHESIS ARE REFERENCE DIMENSIONS. LIMITS ON AMPLITUDE OF VIBRATION MEASURED AT BEARING HOUSING = .001[.02] CONNECTED FOR 230V. DUAL VOLTAGE MOTOR. SEE CONNECTION DIAGRAM TO CHANGE VOLTAGE TO 115 VOLTS. CTQ REQUIREMENT SEE EP000105-008 RoHS & REACH REQUIREMENT SEE EP000014.



PERFORMANCE CURVE	APPROVED SAMPLE		
C48M2W25	CSR-000017AP5		
UL COMPONENT	CSA		
FILE#	CCN#	FILE#	GUIDE#
PENDING	PENDING	PENDING	PENDING
CUSTOMER	DISTRIBUTION		

CRITICAL TO QUALITY CHARACTERISTICS (CTQs) (P) PROCESS (E) ENGINEERING (A) APPLICATION (R) REGULATORY (L) LIFE	DRAWING REVISION: ECR-0216843 ECO DESCRIPTION: SEE ECR	REVISION BY: HAIKUA ZHANG APPROVED BY: TRISTIA ZHAO	DATE: 04-09-2022 DATE: 04-09-2022	TOLERANCES UNLESS OTHERWISE SPECIFIED DEC. INCH mm ANGLE .X ±0.1 [±3] ±0.5° .XX ±0.02 [±0.5] .XXX ±0.005 [±0.13] .XXXX ±0.0005 [±0.013] REMOVE BURRS & BREAK SHARP EDGES .003/.015 [0.08 .38] CORNER FILLETS .02 [5] MACHINED SURFACES: 125 INCH mm 32 mm SHOWN IN [BRACKETS]	DRAWN BY: FX DATE: 09-08-2010 APPROVED BY: BL DATE: 09-08-2010 REFERENCE:	REGAL™ Regal Beloit America, Inc. DESCRIPTION: MODEL-PFHP-48FR OUTLINE MATERIAL: PROCESS/FINISH:
	COPYRIGHT REGAL BELOIT AMERICA, INC. ALL RIGHTS RESERVED. PROPRIETARY AND CONFIDENTIAL INFORMATION - THIS DOCUMENT IS THE PROPERTY OF REGAL BELOIT AMERICA, INC. (OWNER) AND CONTAINS OWNER'S PROPRIETARY INFORMATION. ANY REPRODUCTION, COPIING, OR OTHER USE, WITHOUT THE EXPRESS WRITTEN PERMISSION OF REGAL BELOIT AMERICA, INC. IS STRICTLY PROHIBITED. BY RECEIVING IT, TO AGREE THAT IT, AND/OR ANY PART OF IT, SHALL NOT BE DISCLOSED TO ANY PERSON, CORPORATION OR OTHER ENTITY, DUPLICATED, AND/OR USED, EXCEPT AS EXPRESSLY APPROVED IN WRITING IN ADVANCE BY OWNER. THIS DOCUMENT SHALL BE RETURNED TO OWNER UPON REQUEST. IT MAY BE SUBJECT TO CERTAIN RESTRICTIONS UNDER APPLICABLE EXPORT CONTROL LAWS AND REGULATIONS.		THIRD ANGLE PROJECTION		SIZE DWG NO: C BN35V1 SHEET: 1	

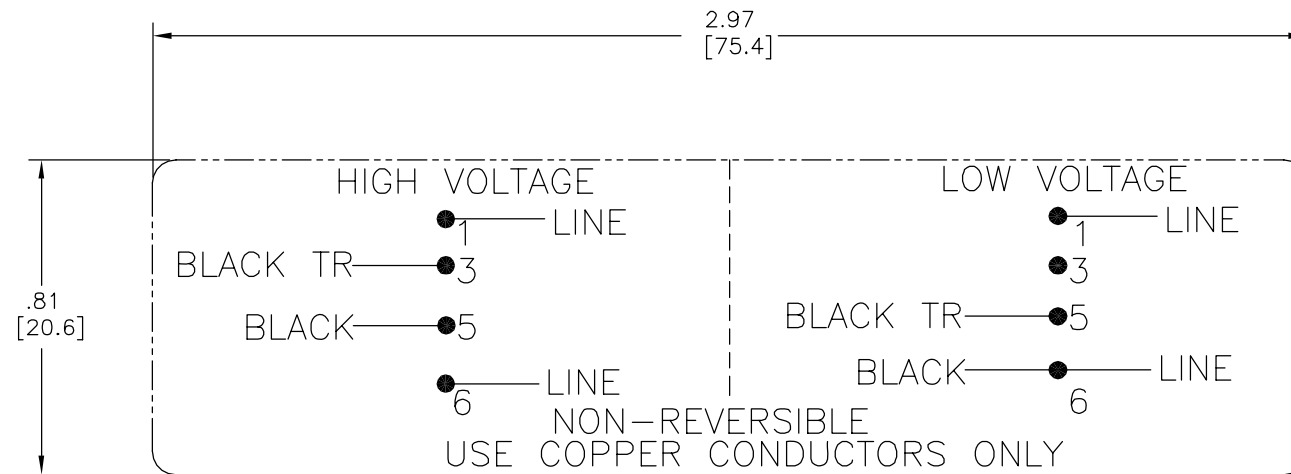
4

3

2

1

REV	ECO	REV BY	DATE	APPD	DATE
A	0034125	J.M.RAMIREZ	06-11-2013	S.JIMENEZ	06-11-2013



115/230 VOLT SINGLE SPEED

NOTE:

1. FOR USE WITH 616231 NAMEPLATE BLANK.
2. --- -- -- -- INDICATES DIMENSIONAL LIMITS.
3. DIE MUST PRODUCE A LEGIBLE IMPRESSION.

GEOMETRIC CHARACTERISTICS & SYMBOLS	
▭	FLATNESS
—	STRAIGHTNESS
∠	ANGULARITY
⊥	PERPENDICULARITY (SQUARENESS)
//	PARALLELISM
○	ROUNDNESS (CIRCULARITY)
⊘	CYLINDRICITY
△	PROFILE OF ANY SURFACE
∩	PROFILE OF ANY LINE
⊕	RUNOUT
⊕	TRUE POSITION
◎	CONCENTRICITY
≡	SYMMETRY

UNLESS OTHERWISE SPECIFIED DIM. TOLERANCES ARE AS FOLLOWS:	
INCH	±.1 ±.02 ±.005 ±.0005
mm	±0.5 ±0.13 ±0.013
ANG.	±.50 DEG
REMOVE BURRS & BREAK SHARP EDGES:	
INCH	.003-.015 mm 0.1-0.4
CORNER FILLETS TO:	
INCH	.020 mm 0.5
MACHINE SURFACES:	
INCH	125 mm 3.2
METRIC DIMS. SHOWN IN [BRACKETS]	

DR BY:	J.M.RAMIREZ	06-11-2013
APPD:	S.JIMENEZ	06-11-2013
THIRD ANGLE PROJECTION		EDS DATE 11-11-2011 FORMAT REV H
CONFIDENTIAL: THIS DRAWING AND ITS INFORMATION ARE THE EXCLUSIVE AND CONFIDENTIAL PROPERTY OF REGAL-BELOIT CORPORATION AND ARE NOT TO BE DISCLOSED, DUPLICATED, DISTRIBUTED OR OTHERWISE USED WITHOUT THE WRITTEN CONSENT OF REGAL-BELOIT CORPORATION. -ALL RIGHTS RESERVED.		

REGAL-BELOIT CORPORATION	
DESCRIPTION CONN DIAGRAM-EXTERNAL	
SIZE C	DWG NO D0000480-001
SCALE NONE	SHEET 1

4

3

2

1

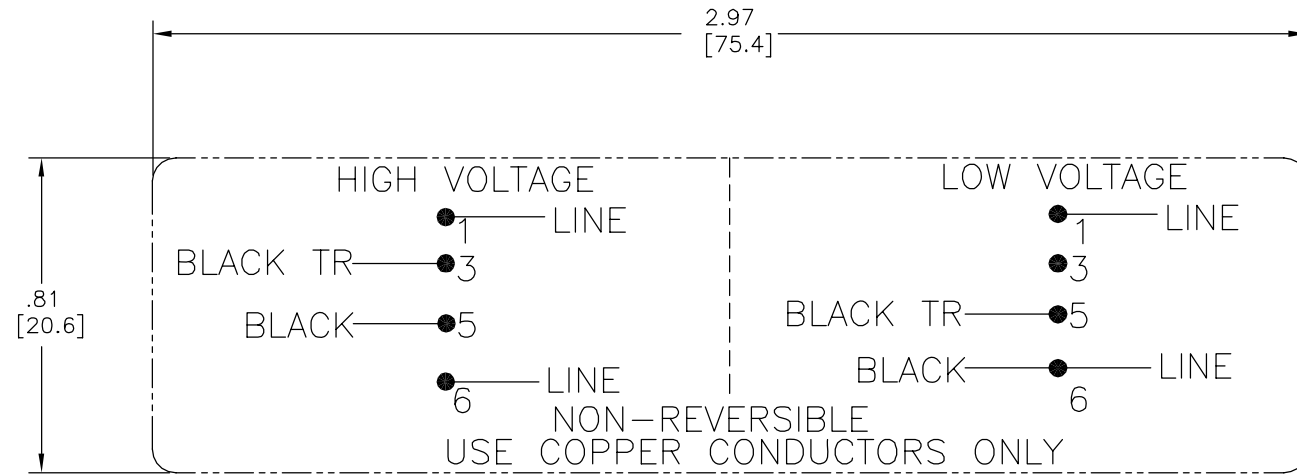
4

3

2

1

REVISION:	ECO	REVISADO POR:	FECHA:	APROBADO POR:	FECHA:
A	0034125	J.M.RAMIREZ	06-11-2013	S.JIMENEZ	06-11-2013



VELOCIDAD UNICA DE 115/230 VOLTIOS

NOTA:

1. PARA USAR CON PLACA DE DATOS EN BLANCO 616231
2. --- -- -- -- INDICA LOS LIMITES DIMENSIONALES.
3. EL DADO DEBE PRODUCIR UNA IMPRESION DIE LEGIBLE.

CARACTERISTICAS DE GEOMETRIA Y SIMBOLOS ▢ PLANICIDAD — RECTITUD ∠ ANGULARIDAD ⊥ PERPENDICULARIDAD (A ESCUADRA) // PARALELISMO ○ REDONDEZ (CIRCULARIDAD) ∅ CILINDRICIDAD △ PERFIL DE CUALQUIER SUPERFICIE ∇ PERFIL DE CUALQUIER LINEA ∠ VARIACION ⊕ POSICION REAL ⊙ CONCENTRICIDAD ≡ SIMETRIA	A MENOS QUE SE ESPECIFIQUE DE OTRA MANERA, LAS TOLERANCIAS DE LAS DIMS. SON LAS SIGUIENTES: PULG $\pm .1$ $\pm .02$ $\pm .005$ $\pm .0005$ mm ± 0.5 ± 0.13 ± 0.013 ANG. ± 50 GRADOS ELIMINAR REBABAS Y ORILLAS FILOSAS DEL BORDE. PULG .003-.015 mm 0.1-0.4 FILETEAR ESQUINA: PULG .020 mm 0.5 MAQUINAR SUPERFICIES PULG 125 mm 3.2 DIMS METRICAS MOSTRADAS [PARENTESIS]	DIBUJADO POR: J.M.RAMIREZ	06-11-2013	REGAL-BELOIT CORPORATION		
		APROBADO POR: S.JIMENEZ	06-11-2013		DESCRIPCION: CONN DIAGRAM-EXTERNAL	
		TERCER ANGULO DE PROYECCION		FECHA EDS: 11-11-2011 REV. FORMATO: H	TAMAÑO: C	NUMERO DE DIBUJO: D0000480-001
		CONFIDENCIAL: ESTE DIBUJO Y SU INFORMACION SON PROPIEDAD DE USO EXCLUSIVO Y CONFIDENCIAL DE REGAL-BELOIT CORPORATION. Y NO DEBERAN SER REVELADOS, DUPLICADOS, DISTRIBUIDOS O USARSE DE OTRA MANERA SIN EL CONSENTIMIENTO ESCRITO DE REGAL-BELOIT CORPORATION. -TODOS LOS DERECHOS RESERVADOS.			ESCALA: NONE	HOJA: 1

4

3

2

1